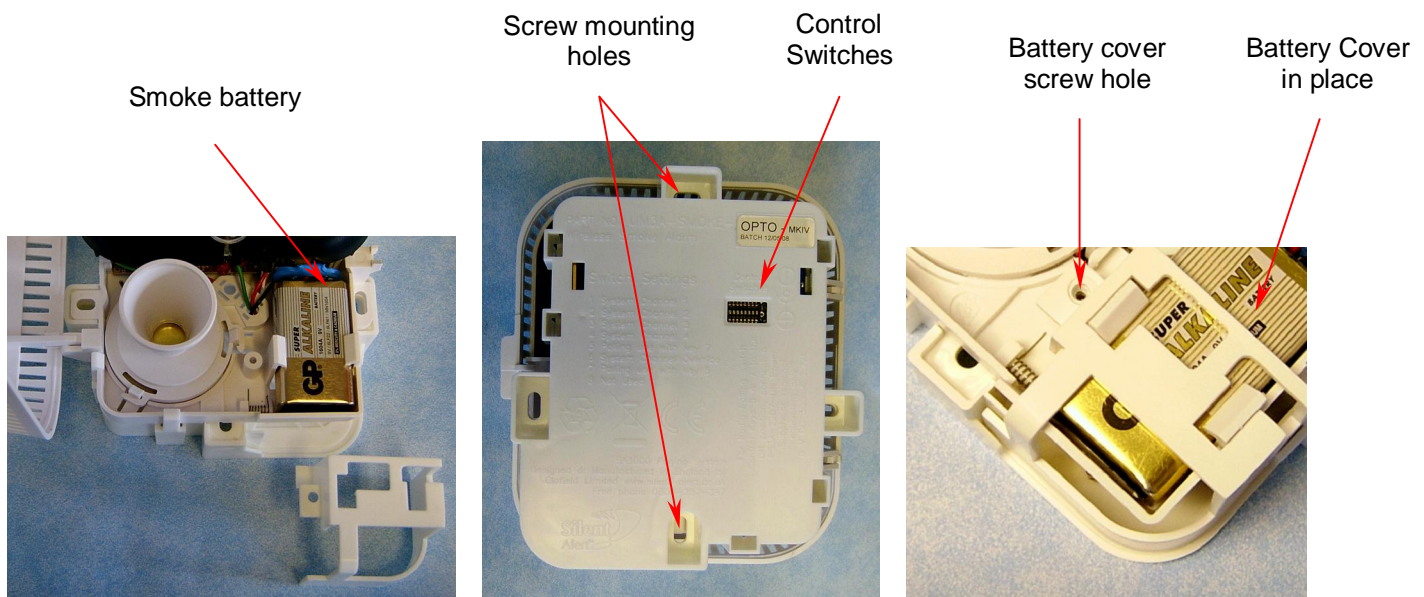


# UM3A-SMOKE-OPTO MKIV Wireless Optical Smoke Alarm

Part of the SA3000 Paging System for deaf and deaf-blind people

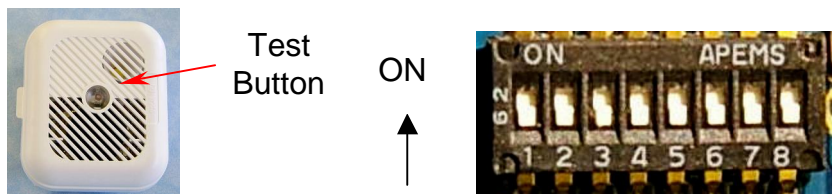


## Getting Started

1. Ensure the SignWave Receiver and the SignWave Base, or Pager unit is fully charged and Alarm Clock Charger or Trickle Charger is installed.
2. Install a 9volt PP3 Alkaline battery in the smoke alarm. **ONLY USE ALKALINE TYPE BATTERY.** Press the Smoke Alarm test button while holding the smoke alarm in the position where it will be secured (Refer to separate instructions for optimum fitting location) and ensure the SignWave or Pager responds to the signal before securing the alarm to the ceiling using the fixing screws.
3. A battery cover is provided that can be either clipped into place or for greater security a 3 mm self-tapping screw can be used to fasten the cover to the smoke alarm.
4. An Alkaline PP3 battery should last two years or more. Low battery signals will be sent to your SignWave or Pager when the battery needs changing.

## Control Switch settings – Only to be changed if another system is close by

5. Control switches 1-4 are for system coding (ON - away from the number adjacent to each key).
6. Control switches 5 & 7 are not used.
7. Control Switch 6 is for system channel override. If this key is set all SignWave and Pager units within range will activate when the smoke alarm sounds regardless of what system channel they are set to. This can be used in multi-occupancy dwellings where a number of systems are working independently of each other for doorbell and telephone alerts but where it is desirable for all users to be alerted to one or more smoke alarm units.
8. Control Switch 8 is not used.



9 100% Recycled Paper

**New 2 Year Warranty**

On All Silent Alert Products produced after 8<sup>th</sup> June 2009

**NOT SUITABLE FOR CHILDREN UNDER 36 MONTHS BECAUSE OF SMALL PARTS. DO NOT IMMERSE THE ALARM IN WATER OR ANY OTHER LIQUID. DO NOT SUBJECT THE UNIT TO EXCESSIVE MECHANICAL SHOCK.**

The SA3000 System comprises a SignWave Receiver (with Base) or Pager Unit (with either an Alarm Clock Charger or Trickle Charger), a Pillow Pad and at least one transmitter option. Clofield Ltd., Chesterfield, England.

Help Line 0800-387-397, Txt 01246-572141, Fax 01246-450789 e-mail [deaf.info@silent-alert.co.uk](mailto:deaf.info@silent-alert.co.uk)