

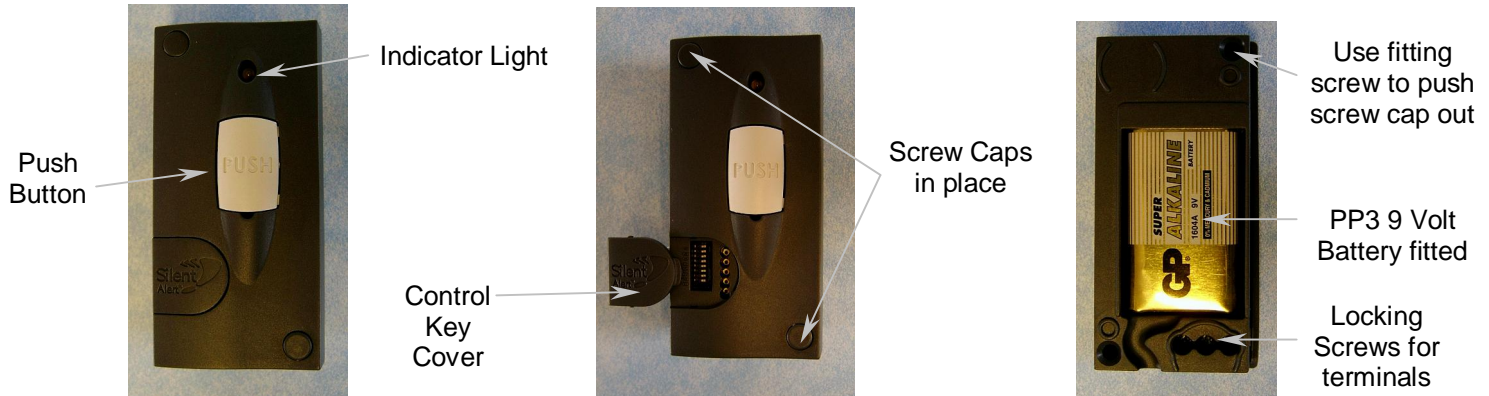
MM4A-2212-EU MKI Mini Monitor

NOT WEATHER RESISTANT use with StormGuard Cover
Part No. SG3A-2212-IN when used Outdoors

New 2 Year Warranty

On All Silent Alert Products produced after 8th June 2009

Doorbell, Door Entry, Car, Burglar, Carbon Monoxide and Interconnectable Smoke Alarm Alert
 Part of the SA3000 Paging System for deaf and deaf-blind people



Getting Started

1. Install a 9 volt PP3 Alkaline or Lithium battery. **ONLY USE ALKALINE OR LITHIUM TYPE BATTERIES.**
2. When a battery is first fitted the indicator light flashes red then green several times, there is a brief pause and it then flashes green several times. The number of green flashes in this second sequence indicates the voltage in the battery. If the light flashes red then the battery is flat and should be replaced. To repeat the battery test, remove the battery then press the Push Button. When the battery is reconnected the battery will be retested automatically. Automatic low battery signals are sent to the Pager or SignWave when the battery runs low. In addition, the indicator light will shine red when the unit is activated or when the push button is pressed, if the battery is low.
3. Secure Mini Monitor to doorframe or the adjacent wall. If a bell push is connected to a chime this may be replaced using the Mini Monitor. Simply remove the existing bell push. Move control key 8 to the On position using the edge of the key cover. Insert the two wires from the door chime to terminals 1 & 3 then tighten the locking screws. Finally, secure the Mini Monitor to the doorframe or wall. Screws & rawlplugs are provided, as are screw covers, which simply push fit over the screw heads.
4. Press the push button, the green light on the front on the monitor will light for a number of seconds, check that a signal is received by the Pager or SignWave and where applicable that the door chime activates.
5. If the Monitor is attached to a metal doorframe it may be necessary to increase the range of the system. To do this move key 5 on the Pager or SignWave to the on position. In the case of the Pager it will be necessary to switch the Pager off for five seconds before moving key 5 to the ON position and then switch the Pager back on again.
6. A voltage applied to terminals 1 & 2 will activate the Monitor. Both AC & DC voltages from 5-30 Volts will activate the unit. If a DC voltage is applied then the positive needs to be connected to terminal 2 and the negative to terminal 1. Door Entry phones can activate the Monitor, as can Car & Burglar Alarms as well as Carbon Monoxide, Heat and Smoke Detectors with interconnect facilities.

Control Switch settings

7. Control Keys 1-4 are for system coding. These must correspond to the settings on the Pager or SignWave.
8. Control Key 5 will cause the Person to Person symbol to light on the Pager & SignWave.
9. Control Key 6 will cause the Burglar Alarm Symbol to light on the Pager & SignWave.
10. Control Keys 5 & 6 together will cause the Fire Symbol to light on the Pager & SignWave.
11. Control Key 7 will enable the Monitor to be triggered by an external short circuit across terminals 1 & 3.
12. Control Key 8 will create a short circuit across terminals 1 & 3. When the Push Button is pressed it will send a signal & activate a door chime when used as a replacement bell push.



NOT SUITABLE FOR CHILDREN UNDER 36 MONTHS BECAUSE OF SMALL PARTS. DO NOT APPLY MAINS POWER OR ANY VOLTAGE IN EXCESS OF 30 VOLTS AS DAMAGE WILL RESULT. ONLY SUITABLY QUALIFIED PERSONS SHOULD ATTEMPT TO LINK THIS UNIT INTO SYSTEMS OR EQUIPMENT OTHER THAN A LOW VOLTAGE DOOR CHIME

9 100% Recycled Paper

The SA3000 System comprises a SignWave Receiver (with Base) or Pager Unit (with either an Alarm Clock Charger or Trickle Charger), a Pillow Pad and at least one transmitter option. Clofield Ltd., Chesterfield, England.

Help Line 0800-387-397, Txt 01246-572141, Fax 01246-450789 e-mail deaf.info@silent-alert.co.uk