

The New SA3000 Silent Alert Fire Safe Paging System



The Silent Alert Fire Safe System offers building managers a simple and cost effective solution to the problem of providing fire alarm cover for people who are Deaf. Ideal for use within workplaces, multioccupancy accomodation & Public buildings

The system includes a discreet Pager unit that can be provided to Deaf members of staff or collected from reception by occasional Deaf visitors

The Fire Safe interface panel links directly to the fire alarm system and is triggered automatically when the fire alarm is activated



The Pager responds by vibrating and illuminating the fire key

SignWave Portable Receiver

An ideal choice for overnight cover for Hard of Hearing users

The portable SignWave alerts users with a high intensity strobe and loudspeaker with adjustable volume control



Compatible with the complete SA3000 system

With base and optional pillow pad for night time cover



The system is compliant with all relevant parts of the British Standard for in-building fire alarms which includes paging for people who are Deaf, BS5839 part 1 2002



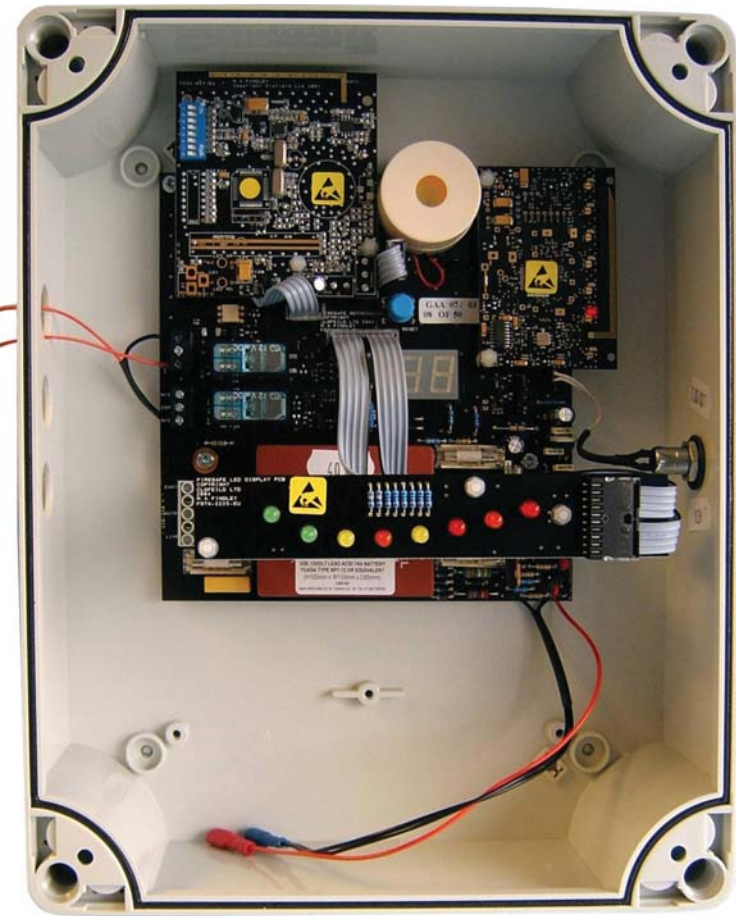
This standard was specifically redrafted to cover paging systems for Deaf people linked to fire alarms

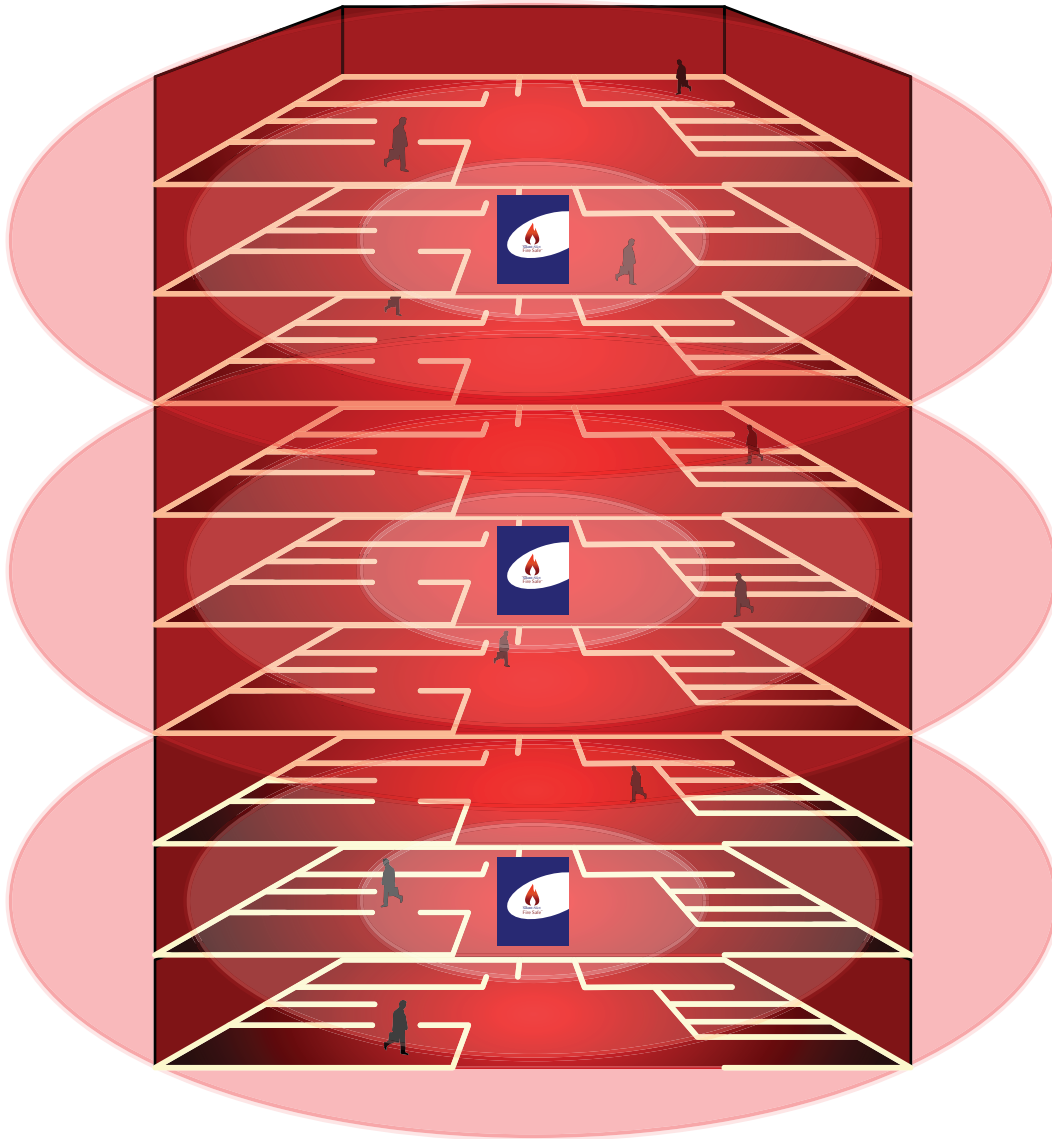
The Fire Safe interface requires three connections

1 Signal from fire alarm or input/output module

2 Fault condition out

3 240V mains input





In open air the system will operate up to a distance of 1000 meters

This will be less within a building and will depend upon the structure

In larger buildings it is possible to include more than one Interface panel to ensure total coverage

Range test kits are available for site surveys to easily determine how many panels are needed

The system is radio licence exempt and can be installed and serviced by the existing fire alarm maintenance company



The Fire Safe compatible Pager and Signwave are supplied as part of the market leading Silent Alert SA3000 home Paging System

All Silent Alert receivers have a unique feature that allows the user access to fire alarm cover in any public building where the Fire Safe system is installed









The Fire Safe system can be used for 24 hour cover within a residential home, Hotel or multi occupancy building.

Individual users can be made aware of their own doorbell, telephone and smoke alarm using unique system codes whilst all receivers will respond to the fire alarm as the signal is non system channel specific



This means that regardless of the system channel setting when a Fire Safe signal is sent all receivers will vibrate and illuminate the fire symbol

Key features:

-  Low capital cost
-  Can be fitted and maintained by existing fire alarm maintenance company
-  No high cost long term maintenance contracts
-  Low cost additional / replacement pagers
-  Complies with BS5839-1 2002
-  Radio licence exempt
-  Accessible by users of our domestic system without having to ask for a Pager at reception
-  User alerted automatically should they leave the building & forget to return the Pager to reception