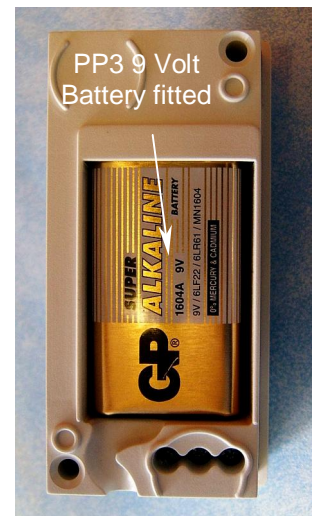
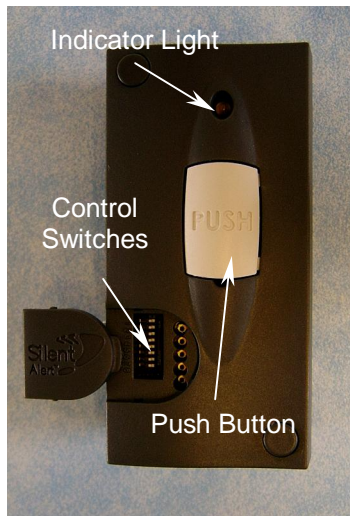


CCC4A-2212-EU Care Call Mini Chair Leaving Monitor



Part of the Care Call Paging System for Carers



Getting Started

1. Install a 9 volt PP3 Alkaline or Lithium battery. **ONLY USE ALKALINE OR LITHIUM TYPE BATTERIES.**
2. When a battery is first fitted the indicator light flashes red then green several times, there is a brief pause and it then flashes green several times. The number of green flashes in this second sequence indicates the voltage in the battery. If the light flashes red then the battery is flat and should be replaced. To repeat the battery test, remove the battery then press the Push Button. When the battery is reconnected the battery will be retested automatically. Automatic low battery signals are sent to the Pager or SignWave when the battery runs low. If the battery is low the indicator light will shine red when the unit is activated by the Pad or after the push button is pressed and released.
3. To test the unit press then release the Push Button. There will be a short delay then the indicator light will shine green and a signal is sent.
4. The unit will by default cause zone 1 to light on the Pager or SignWave. To change the zone (i) remove the battery (ii) press the push button (iii) replace the battery and quickly press then release the push button during the red / green start up sequence. The indicator light will then begin flashing red. The light will flash once, then twice, then three times and so on up to 12. To set the zone number, briefly press the push button at the desired number of flashes. The indicator light shines green to confirm the selection; the battery level flashing sequence follows this. Press, then release the Push Button again to send a test signal to the Pager or SignWave.
5. Plug a Care Call Chair Leaving Pad (PM5) to the socket on the Monitor. Place the Pad and Monitor under the cushion of a chair, ensuring that the pad is centrally located and the monitor is placed towards the back of the chair. It is important that the Monitor push button is not depressed when the user is seated on the chair. As the user rises from the chair the Monitor will send a radio signal to the Pager or SignWave.
6. It is possible to increase the range of the system. To do this move key 5 on the Pager or SignWave to the on position. In the case of the Pager it will be necessary to switch the Pager off for five seconds before moving key 5 to the ON position and then switch the Pager back on again.

Control Switch settings (move away from the numbers on the plastic case to switch On)

1. Control Keys 1-4 are for system coding. These must correspond to the settings on the Pager or SignWave.
2. Control Key 5-6 Not Used
3. Control Key 7 **must be left in the On position**
4. Control Key 8 Not used

NOT SUITABLE FOR CHILDREN UNDER 36 MONTHS BECAUSE OF SMALL PARTS. DO NOT APPLY MAINS POWER OR ANY VOLTAGE IN EXCESS OF 30 VOLTS AS DAMAGE WILL RESULT.

9 100% Recycled Paper

New 2 Year Warranty
On All Care Call Products produced after 15th January, 2010